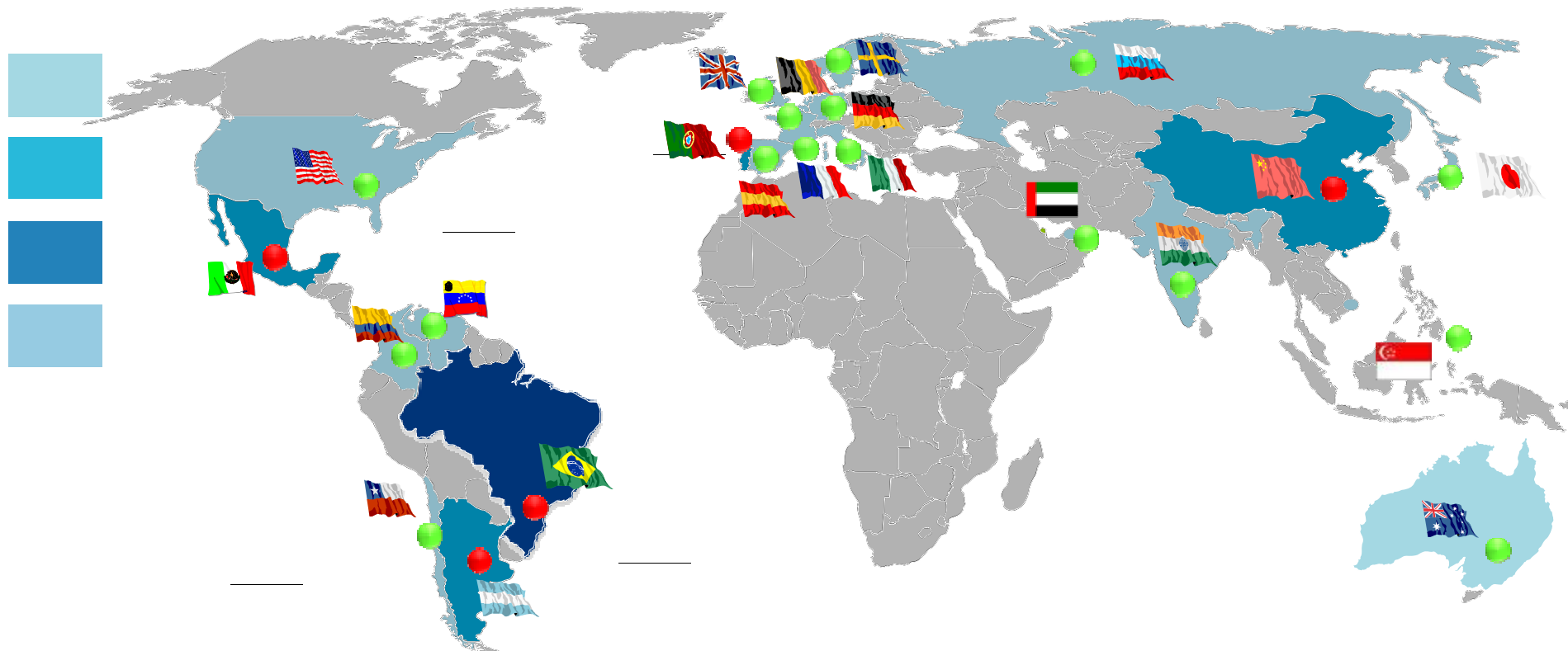


A vertical decorative bar on the left side of the page, consisting of four stacked squares of different shades of blue: light blue, medium blue, dark blue, and light blue.

# **WEG Industries (India) Pvt. Ltd.**

**Electric Motors, Generators Manufacturing Plant at Hosur,  
Tamil Nadu - India**

# Global Presence



● **Factories in 5 countries**

● **Commercial branches in 22 countries**

> **Distributors & Agents in over 85 countries**

> **Over 1100 Service Centers covering all 5 continents**

> **Sales to over 110 countries**

# Business Units



## MOTORS



BRAZIL  
 ARGENTINA  
 MEXICO  
 PORTUGAL  
 CHINA

## ENERGY



BRAZIL  
 MEXICO  
 PORTUGAL  
 CHINA  
 INDIA

## AUTOMATION



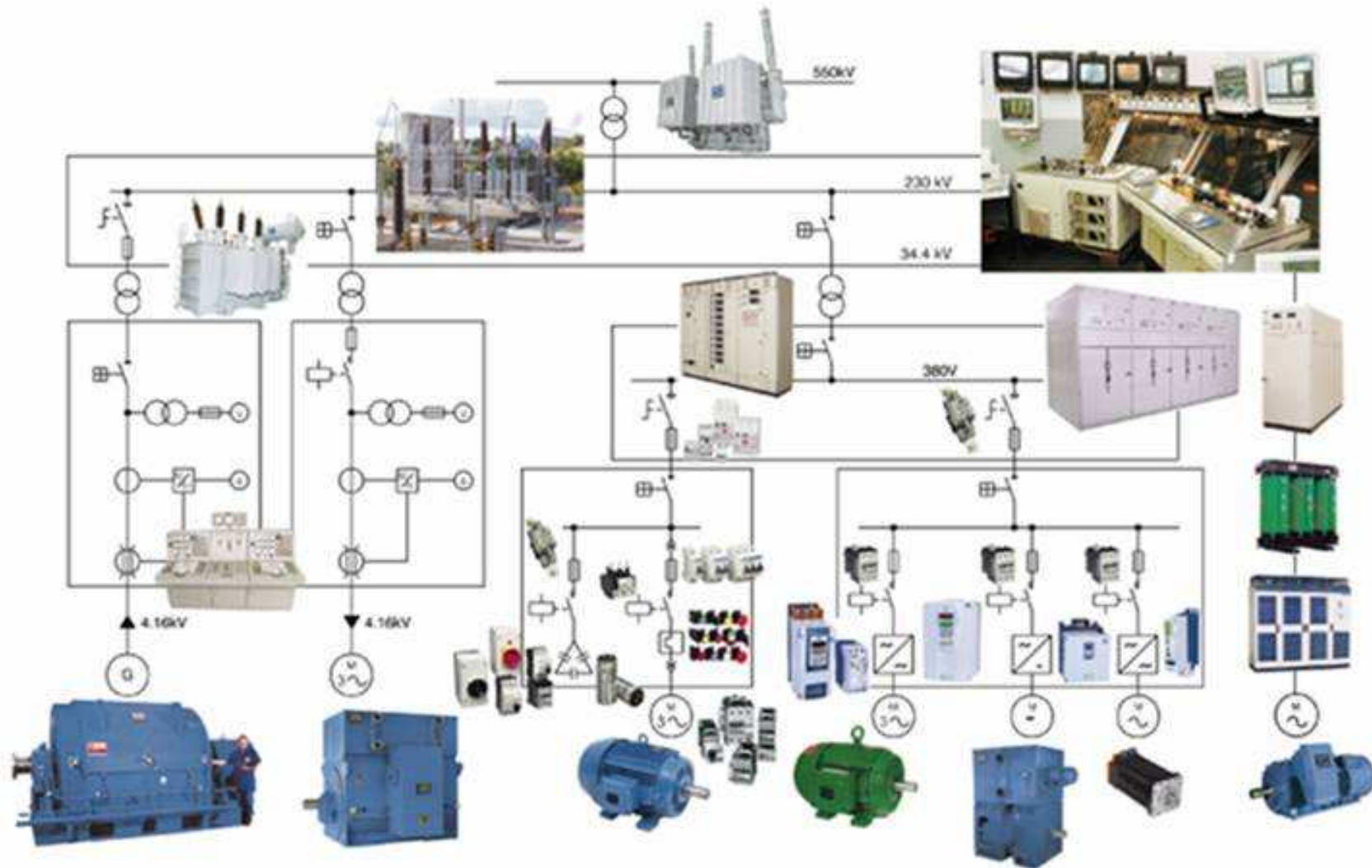
BRAZIL  
 ARGENTINA  
 MEXICO

## COATINGS

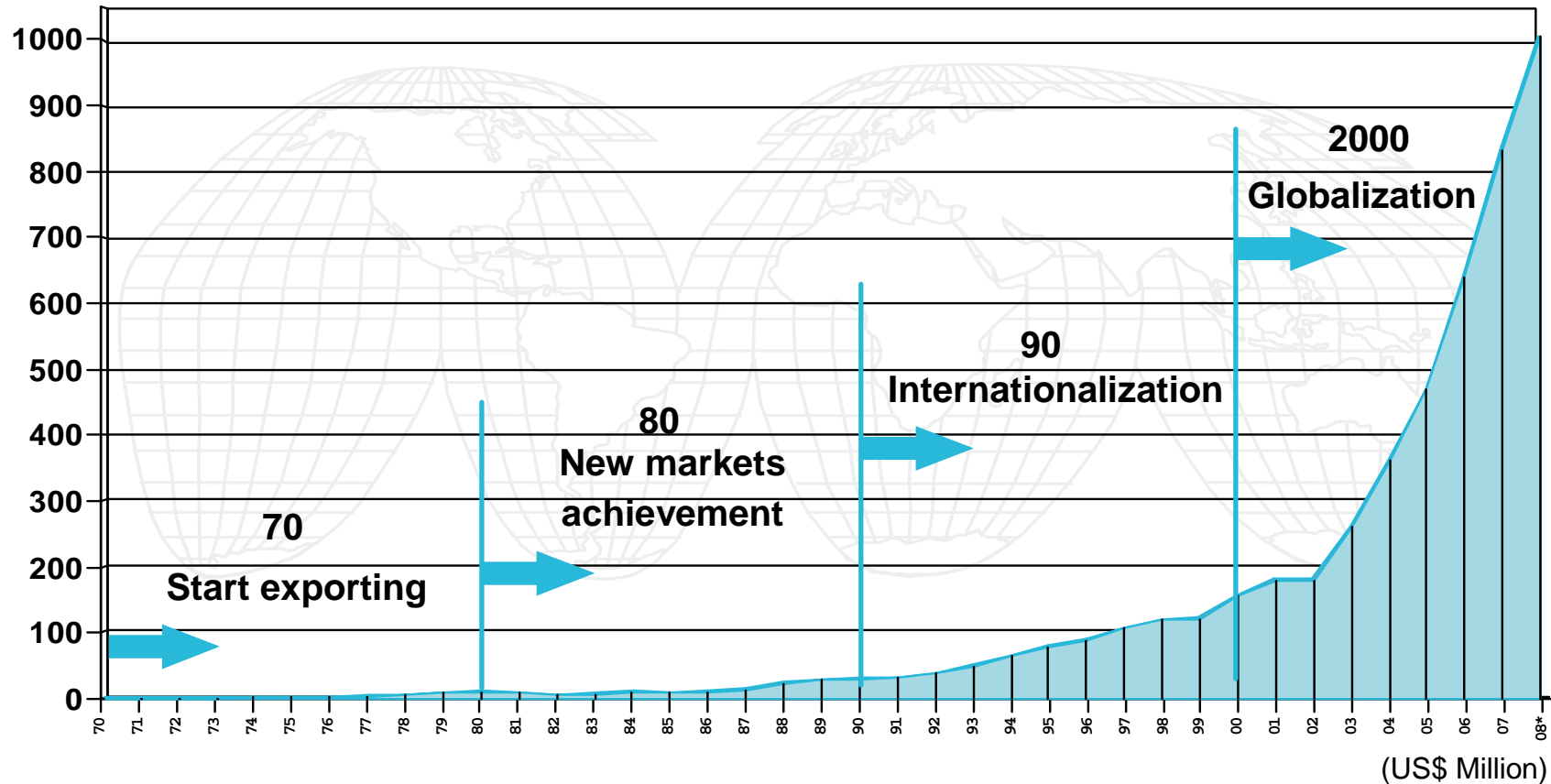


BRAZIL

# Synergy = Solutions for Industrial Systems



# WEG Global



WEG Global: Interdependent global operation

## WEG History in India

- 2000: WEG Representative - Premier Electric
- 2003: First Project Pumping Station - Kirloskar Brothers (KBL) Godavari.
  - 4 OS Motors for CW Pump
  - 2 x 8.5 MW / 10P / 11 KV / V1
  - 2 x 8.5 MW / 10P / 11 KV / V1
  - 2 x 6 MW / 12P / 11 KV / V1
  - 2 x 3 MW / 12P / 11 KV / V1
- 2004: As part of new project - Power Generation NTPC ( National Thermal Power Corporation)
  - Kahalgaon (3 x 500 MW Power Project (CW Pump Motor)
  - 7 Nos 2150 kW / 18P / 11kV / CACA Motor
  - Sipat II (2 x 500 MW Power Project (CW Pump Motor)
  - 5 Nos 2150 kW / 18P / 11KV / CACA Motor.

## Our Branch

- 2004: Opening the Commercial Branch

WEI - WEG Electric (India) Pvt. Ltd.

#38, Ground Floor, 1st Main Road,

Lower Palace Orchards, Bangalore 560 003

Phone(s) : +91-80-4128 2007

- 2009: Beginning of factory construction: WII - WEG Industries (India) Pvt. Ltd. – Hosur / Tamil Nadu
- 2010: WII - Start of production (June)

# Business Vision

- **THREE TOP MOST INDUSTRY SEGMENT INVESTMENT PLAN 2006 -2012:**

THERMAL POWER	77 BILLION US\$
STEEL	35 BILLION US\$
REFINERIES & PETROCHEM	22 BILLION US\$

- **POWER SECTOR - A BOTTLE-NECK IN GDP TARGET**

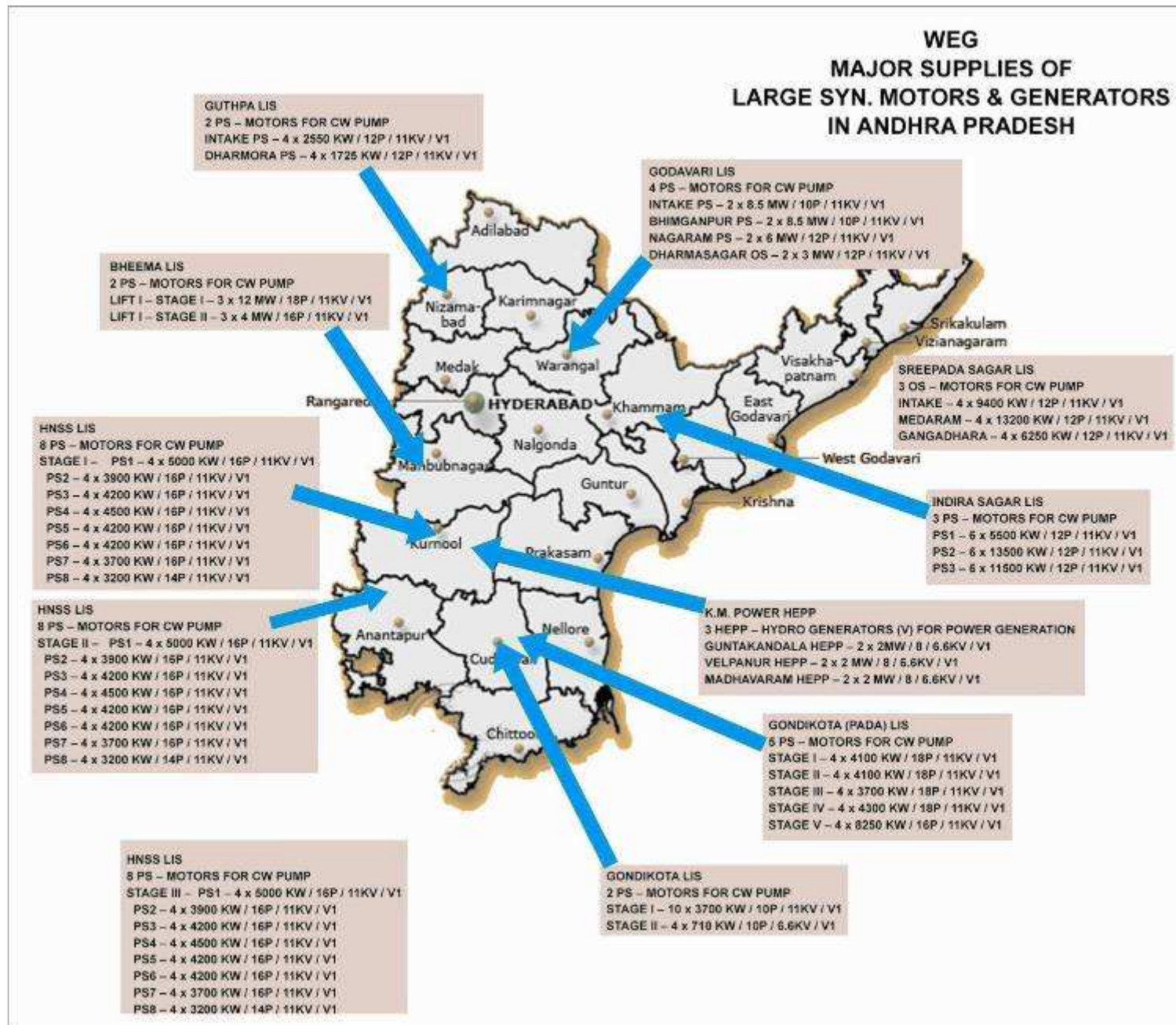
- 10% GDP growth by the end of 11th Plan - Power Sector is a bottle-neck.
- To achieve the targeted GDP growth of 10%, it is imperative that Manufacturing Sector enhances growth to minimum of 15%.
- To match manufacturing sector growth of 15%, the power sector must grow at 10% as against present rate of 5% to 6%.

- **Private Sector Investment**

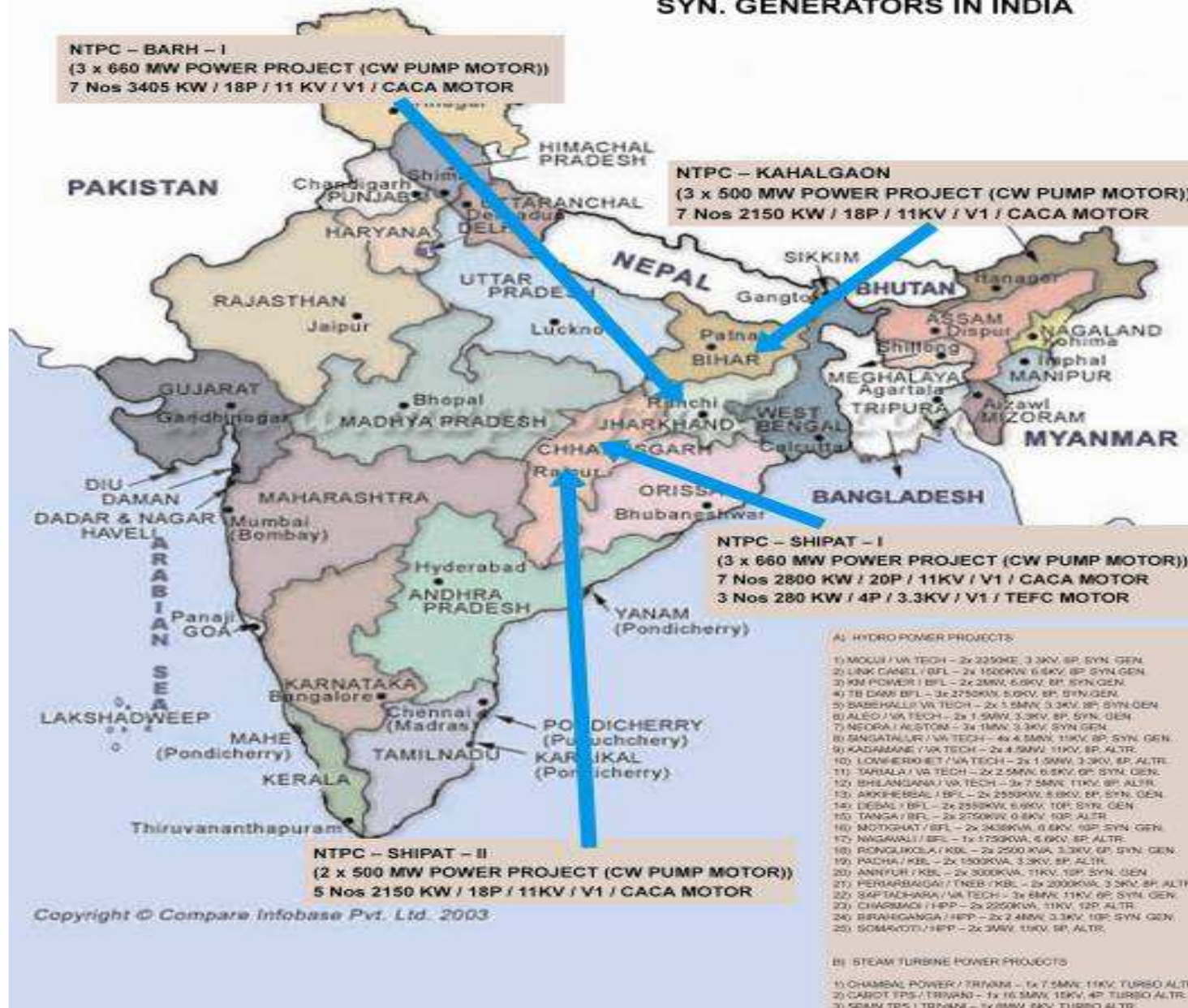
- Steel Industries:
  - TISCO Expanding in Jharkhand & Orissa. – approx Investment US\$ 10.8 Billion;
  - Jhindal steel expanding in Karnataka,MP & orissa.- approx Investment US\$ 2.2 Billion;
  - World Steel Giants like Mittal Steel and POSCO setting up Plants in Eastern India;
  - Mittal Investment – US\$ 8.7 Billion
  - POSCO Investment – US\$ 10.8 Billion
- OIL & PETRO Scenario (2006-2012)
  - Large Investment in Govt. Sector
    - IOCL – Rs 55000 Cr.(12 billion US\$).
    - HPCL+BPCL+CPCL–Rs.16000 Crs.(3.5 billion US\$)



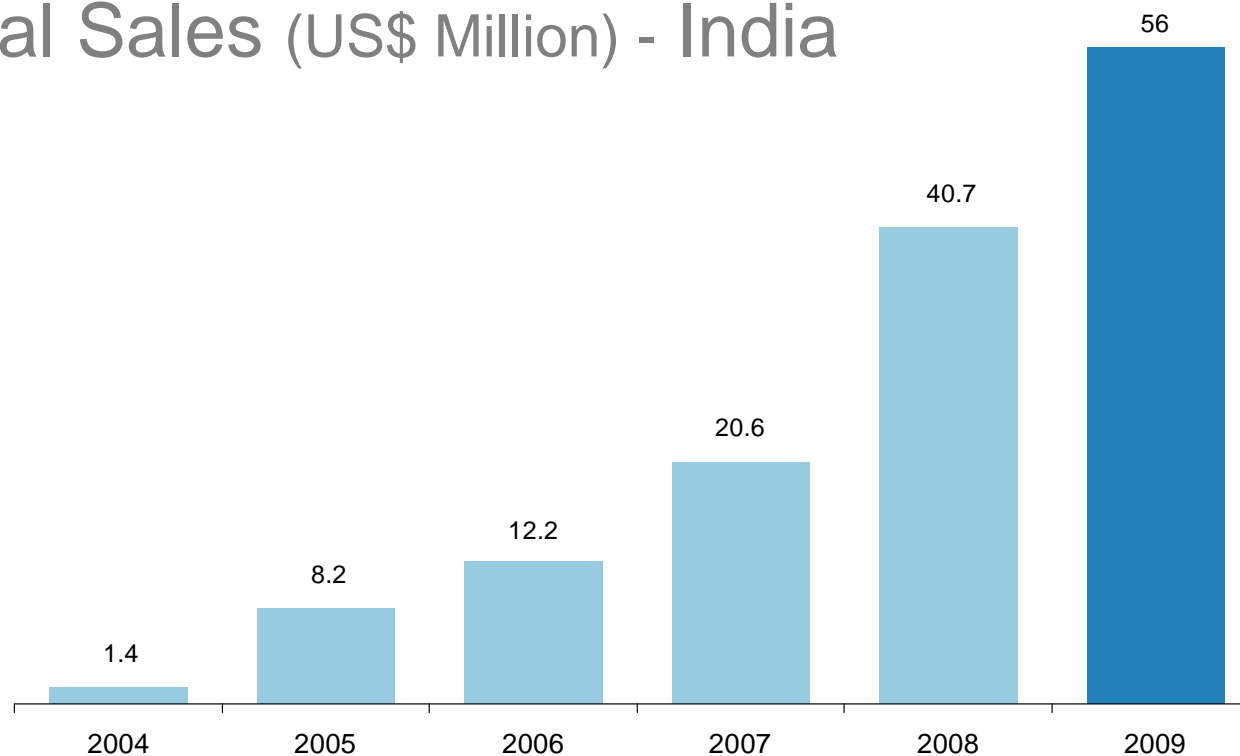
## WEG MAJOR SUPPLIES OF LARGE SYN. MOTORS & GENERATORS IN ANDHRA PRADESH



## MAJOR WEG SUPPLIES OF HT MOTORS & SYN. GENERATORS IN INDIA



# Annual Sales (US\$ Million) - India



YEAR	WAU	WMO	WM	TOTAL	GROWTH
2004	0	687.266,00	762.131,00	1.449.397,00	280,68%
2005	0	441.988,00	7.737.651,00	8.179.639,00	464,35%
2006	3.380,00	1.170.407,00	10.995.236,00	12.169.023,00	48,77%
2007	143.271,00	1.194.379,00	19.237.570,00	20.575.220,00	69,08%
2008	104.877,00	1.944.269,00	38.661.697,00	40.710.843,00	97,86%

# WII – WEG India Manufacturing Plant



# Land and Building Construction

- ✓ Phase I total area (35 acres): 141.645 m<sup>2</sup>

## Building Dimension

- ✓ Factory area: 19.500 m<sup>2</sup>
- ✓ Free height: 20m and 11,6 m
- ✓ Max crane height: 17m and 9m

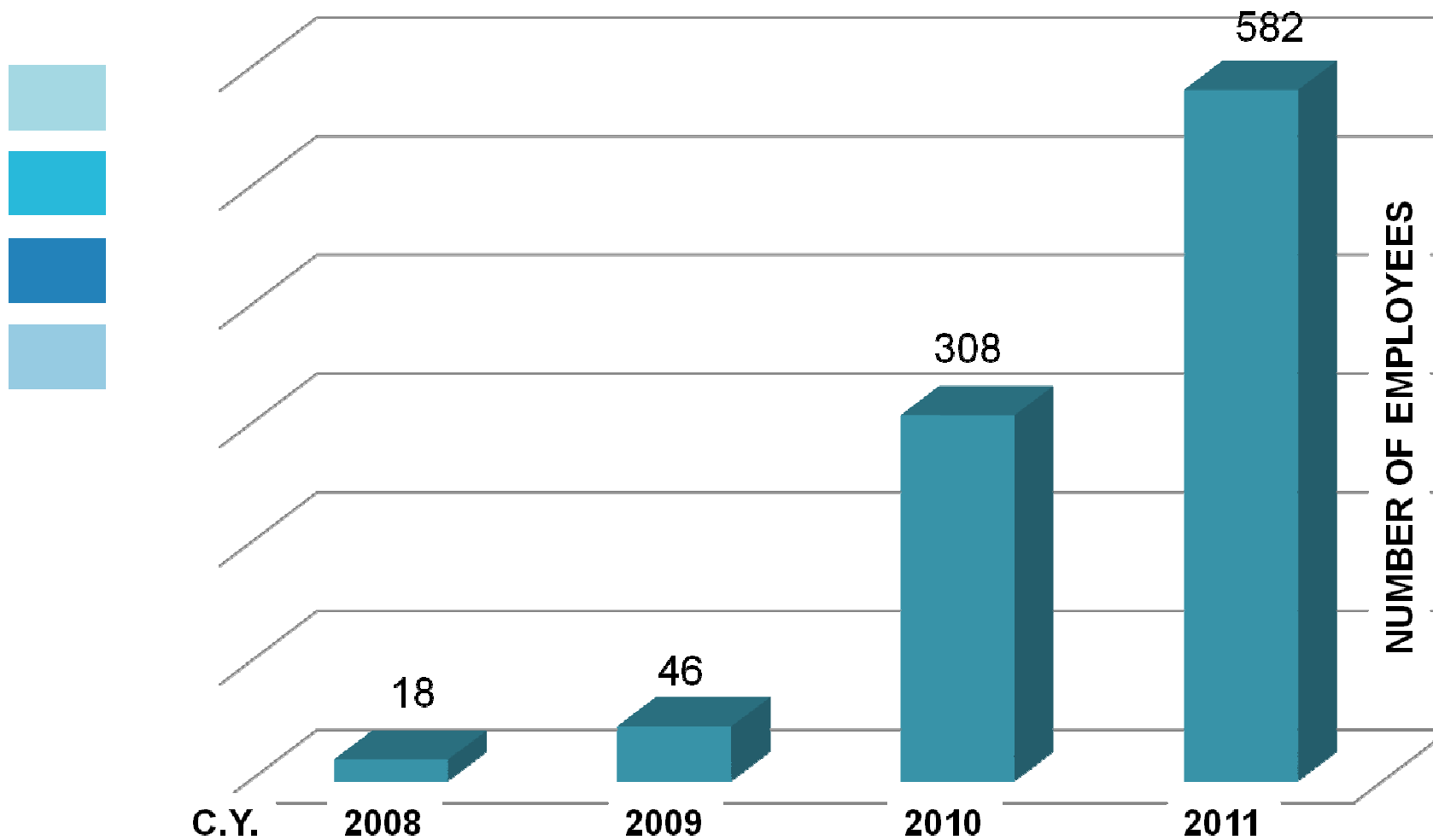
### ■ First Stage

- Production of MV & HV electric motors
- Frame sizes: 710 up to 2500
- Investments: US\$ 60 Million (To be concluded in 2010)

### ■ Second Stage

- Production of Transformers and H Line
- Investments: US\$ 60 Million (To be concluded in 2013)

# People



THANK YOU



TOGETHER FOR BETTER

